



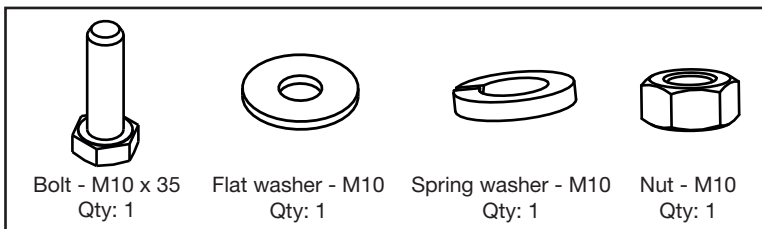
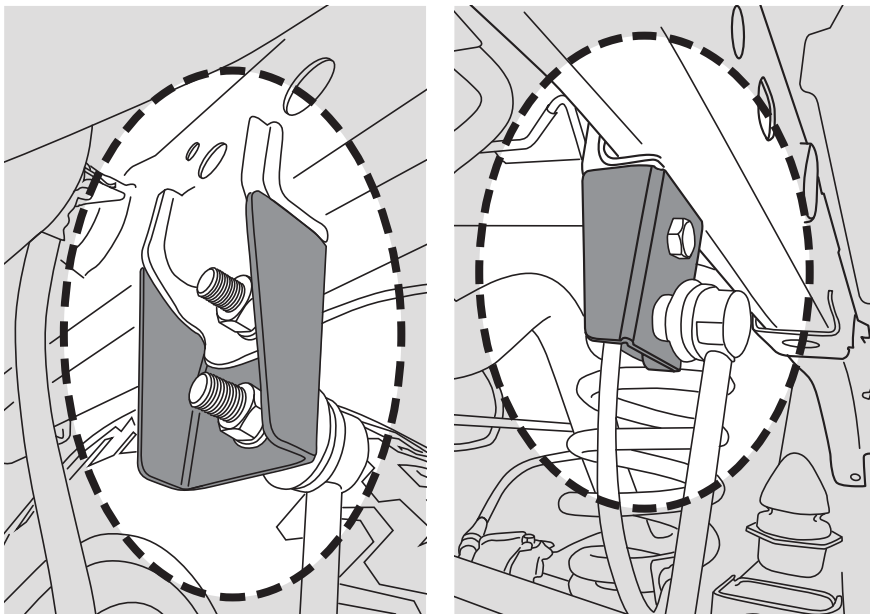
**Nissan Navara NP300 (Coil Spring Models)**  
**Sway Bar Extension Bracket Kit**  
**Headlight Sensor Bracket Kit**

**PART NUMBER: 1204K**

**Rear Sway Bar Link Bracket:**

1. Remove bolt that secures sway bar link to chassis mount.
2. Attach new bracket using hardware provided to chassis mount. Refer Fig 1.
3. Re-attach sway bar link to new bracket using original hardware.

Fig 1.



<b>Thread:</b>	M10 x 1.25
<b>Tightening Torque:</b>	55Nm

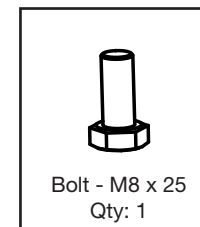
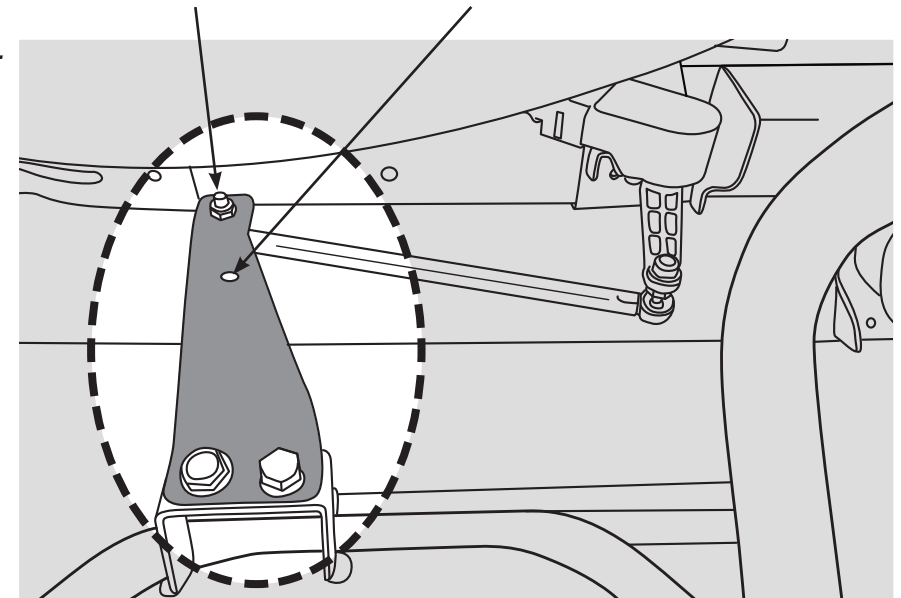
**Headlight Sensor Bracket: (located on rear differential housing)**

1. Disconnect link rod and remove original bracket.
2. Install new bracket as shown using hardware provided.
3. Re-attach link rod to new bracket.

\* For lifts up to 50mm, use upper hole as shown.

\* Standard height with extended travel shock absorbers use lower hole

Fig 2.



<b>Thread:</b>	M8 x 1.25
<b>Tightening Torque:</b>	30Nm